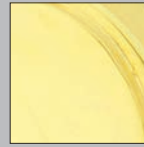


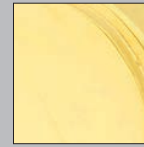
***Unlacquered Brass (US3NL)** is a custom, made-to-order finish. It is available with an upcharge, per item and requires an additional 2-3 day lead time. This living finish will gracefully age and evolve in appearance over time. Because of this characteristic, no finish warranty is offered on unlacquered brass products.



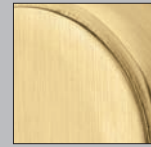
Polished Brass (US3)



Polished Brass - Lifetime (US3)



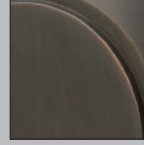
Unlacquered Brass (US3NL)*



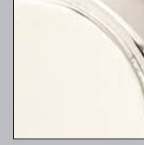
Satin Brass (US4)



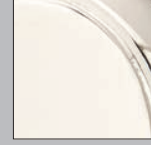
French Antique (US7)



Oil Rubbed Bronze (US10B)



Polished Nickel (US14)



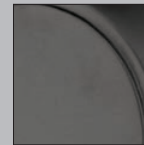
Polished Nickel - Lifetime (US14)



Satin Nickel (US15)



Pewter (US15A)

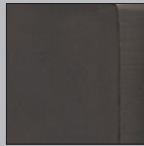


Flat Black (US19)

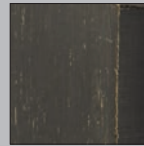


Polished Chrome (US26)

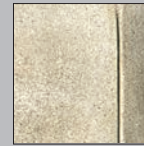
Bronze Patina is a living finish that will age gracefully, revealing the underlying bronze over time. Because of this characteristic, no finish warranty is offered on bronze patina products.



Flat Black Bronze Patina (FB)

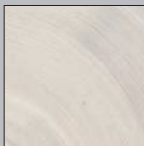


Medium Bronze Patina (MB)



Tumbled White Bronze (TWB)

Stainless Steel carries a five-year finish warranty. All stainless steel will require some periodic cleaning to keep your hardware looking like new.



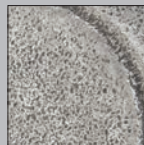
Brushed Stainless Steel (SS)



Polished Stainless Steel (PSS)



Flat Black Steel (FBS)



Satin Steel (SWS)